

FRAME ONLY

Pre-Cut Kit

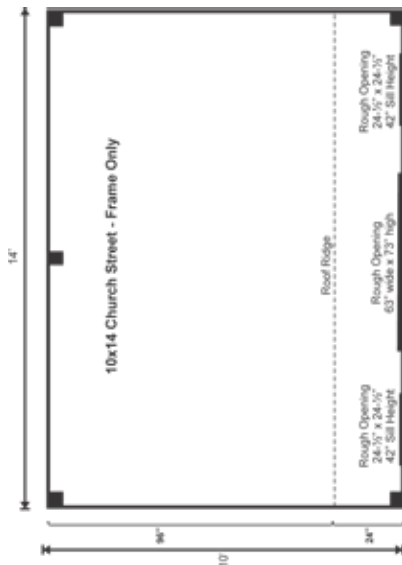
10X14 CHURCH STREET

STORAGE SOLUTIONS

STORAGE SOLUTIONS



We took our Saltbox shed and gave it some flair. The roofing is upgraded to architectural asphalt shingles with a copper roll ridge cap and the siding is horizontal Eastern White pine clapboard.



10X14 CHURCH STREET FRAME ONLY PRE-CUT KIT

Base Area: 140 sq. ft.
Total Interior Area: 140 sq. ft.
Recommended Foundation:
4-6" Crushed Gravel
Overall Dimensions:
10'6"H x 14'W x 10'D
Estimated Weight: 2600 lbs

Floor System

2 (qty) 4"x6"x14' Hemlock Skids
2"x6" rough sawn Hemlock Joists 24" On Center

Walls

4"x4" Hemlock Post and Beam Wall Framing
Wall Height: Front: 85" Rear: 65"

The frame only kit includes rough sawn hemlock floor, wall and roof framing, plus hardware and step-by-step DIY building instructions. Note: Pictures may reflect client upgrades and modifications that do not come standard.

Roof

Saltbox Roof Style
Roof Pitch: Front: 10/12 Rear: 6/12
2"x6" rough sawn Hemlock Rafters 24" On Center
1"x6" rough sawn Hemlock Exposed Collar Ties

Rough Openings:

1 (qty) 63"W x 73"H Rough Opening for Door
2 (qty) 2'x2' Rough Opening for Window

Assembly & Logistics Information

Estimated Assembly Time:
Two People: 16 hrs
Estimated Shipping Cube Sizes
Cube 1: 42"x26"x168"

FRAME ONLY PRE-CUT KIT:

The budget friendly frame only pre-cut kit includes skids, floor joists, 4x4 post and beam hemlock wall framing, roof rafters, hardware and step-by-step D.I.Y. building instructions.

EVERY KIT INCLUDES

- Color Coded
- Part Numbered
- Step-by-Step Instructions
- & All Fastening Hardware Included

Configure Yours at

WWW.JAMAICACOTTAGESHOP.COM

CHURCH.10X14.FPCK