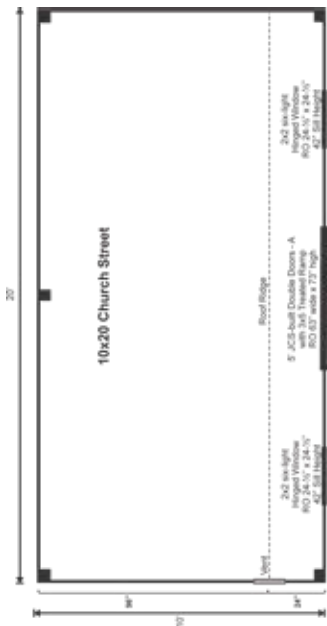


COMPLETE Pre-Cut Kit



We took our Saltbox shed and gave it some flair. The roofing is upgraded to architectural asphalt shingles with a copper roll ridge cap and the siding is horizontal Eastern White pine clapboard.



COMPLETE PRE-CUT KIT:

A weather tight shell. The PCK is the complete kit for a design. It includes everything required to assemble the building shell and includes doors and windows.

EVERY KIT INCLUDES

- Color Coded
- Part Numbered
- Step-by-Step Instructions
- & All Fastening Hardware Included

Configure Yours at

WWW.JAMAICACOTTAGESHOP.COM

10X20 CHURCH STREET

STORAGE
SOLUTIONS



10X20 CHURCH STREET COMPLETE PRE-CUT KIT

Base Area: 200 sq. ft.

Total Interior Area: 200 sq. ft.

Recommended Foundation:
6–8" Crushed Gravel

Overall Dimensions: 10'6" H
x 21'2" W x 11'2" D

Estimated Weight: 5000 lbs

Floor System

2 (qty) 6"x6"x20' Hemlock Skids

2"x6" rough sawn Hemlock
Joists 24" On Center

¾" CDX Plywood Floor Decking

Floor Weight Rating: 25 lbs/sq. ft.

Walls

4"x4" Hemlock Post and
Beam Wall Framing

Wall Height: Front: 85" Rear: 65"

Siding: Horizontal Pine Clapboard

1" rough sawn Pine Corner, Door
& Window Trim & 2" rough sawn
Pine Fascia & Shadow Trim

Roof

Saltbox Roof Style

Roof Pitch: Front: 10/12 Rear: 6/12

The complete pre-cut kit includes hemlock framing, pine clapboard siding, floor decking, asphalt shingle roof, double doors and barn sash windows. Note: Pictures may reflect client upgrades and modifications that do not come standard.

2"x6" rough sawn Hemlock
Rafters 24" On Center

1"x6" rough sawn Hemlock
Exposed Collar Ties

1" rough sawn Solid Barn
Board Roof Sheathing

Black Architectural Asphalt Shingles
with Copper Roll Ridge Cap

Doors & Windows:

Door: 1 (qty) 5-0 JCS-built 2" Thick
rough sawn Pine Double Doors
w/ 3x5 Pressure Treated Ramp

Windows: 2 (qty) 2'x2' six-lite
Hinged Barn Sash Window

Additional Features

1 (qty) Wood Louvered Vent

Assembly & Logistics Information

Estimated Assembly Time:
Two People: 30 hrs

Estimated Shipping Cube Sizes

Cube 1: 42"x50"x168"

Cube 2: 42"x16"x192"

CHURCH.10X20.PCK