

# FRAME ONLY

Pre-Cut Kit

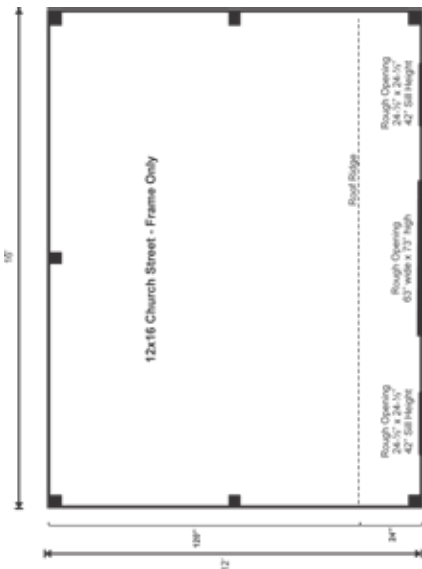
# 12X16 CHURCH STREET

STORAGE SOLUTIONS

STORAGE SOLUTIONS



We took our Saltbox shed and gave it some flair. The roofing is upgraded to architectural asphalt shingles with a copper roll ridge cap and the siding is horizontal Eastern White pine clapboard.



## 12X16 CHURCH STREET FRAME ONLY PRE-CUT KIT

Base Area: 192 sq. ft.  
Total Interior Area: 192 sq. ft.  
Recommended Foundation:  
4–6" Crushed Gravel  
Overall Dimensions:  
10'6"H x 16'W x 12'D  
Estimated Weight: 3200 lbs

### Floor System

2 (qty) 6"x6"x16' Hemlock Skids  
2"x6" rough sawn Hemlock  
Joists 24" On Center

### Walls

4"x4" Hemlock Post and  
Beam Wall Framing  
Wall Height: Front: 83" Rear: 67"

The frame only kit includes rough sawn hemlock floor, wall and roof framing, plus hardware and step-by-step DIY building instructions. Note: Pictures may reflect client upgrades and modifications that do not come standard.

### Roof

Saltbox Roof Style  
Roof Pitch: Front: 12/12 Rear: 4/12  
2"x6" rough sawn Hemlock  
Rafters 24" On Center  
1"x6" rough sawn Hemlock  
Exposed Collar Ties

### Rough Openings:

1 (qty) 63"W x 73"H Rough  
Opening for Door  
2 (qty) 2'x2' Rough  
Opening for Window

### Assembly & Logistics Information

Estimated Assembly Time:  
Two People: 18 hrs  
Estimated Shipping Cube Sizes  
Cube 1: 42"x30"x192"

### FRAME ONLY PRE-CUT KIT:

The budget friendly frame only pre-cut kit includes skids, floor joists, 4x4 post and beam hemlock wall framing, roof rafters, hardware and step-by-step D.I.Y. building instructions.

EVERY KIT INCLUDES

- Color Coded
- Part Numbered
- Step-by-Step Instructions
- & All Fastening Hardware Included

Configure Yours at

[WWW.JAMAICACOTTAGESHOP.COM](http://WWW.JAMAICACOTTAGESHOP.COM)

CHURCH.12X16.FPCK