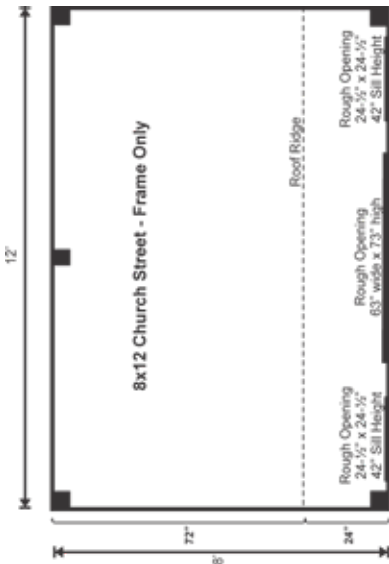


FRAME ONLY

Pre-Cut Kit



We took our Saltbox shed and gave it some flair. The roofing is upgraded to architectural asphalt shingles with a copper roll ridge cap and the siding is horizontal Eastern White pine clapboard.



FRAME ONLY PRE-CUT KIT:

The budget friendly frame only pre-cut kit includes skids, floor joists, 4x4 post and beam hemlock wall framing, roof rafters, hardware and step-by-step D.I.Y. building instructions.

EVERY KIT INCLUDES

- Color Coded
- Part Numbered
- Step-by-Step Instructions
- & All Fastening Hardware Included

Configure Yours at

WWW.JAMAICACOTTAGESHOP.COM

8X12 CHURCH STREET

STORAGE SOLUTIONS



8X12 CHURCH STREET FRAME ONLY PRE-CUT KIT

Base Area: 96 sq. ft.
 Total Interior Area: 96 sq. ft.
 Recommended Foundation:
 4-6" Crushed Gravel
 Overall Dimensions:
 10'6"H x 12'W x 8'D
 Estimated Weight: 2100 lbs

Floor System

2 (qty) 4"x6"x12' Hemlock Skids
 2"x6" rough sawn Hemlock
 Joists 24" On Center

Walls

4"x4" Hemlock Post and
 Beam Wall Framing
 Wall Height: Front: 83" Rear: 71"

The frame only kit includes rough sawn hemlock floor, wall and roof framing, plus hardware and step-by-step DIY building instructions. Note: Pictures may reflect client upgrades and modifications that do not come standard.

Roof

Saltbox Roof Style
 Roof Pitch: Front: 12/12 Rear: 6/12
 2"x6" rough sawn Hemlock
 Rafters 24" On Center
 1"x6" rough sawn Hemlock
 Exposed Collar Ties

Rough Openings:

1 (qty) 63"W x 73"H Rough
 Opening for Door
 2 (qty) 2'x2' Rough
 Opening for Window

Assembly & Logistics Information

Estimated Assembly Time:
 Two People: 15 hrs
 Estimated Shipping Cube Sizes
 Cube 1: 42"x40"x144"

CHURCH.8X12.FPCK

STORAGE SOLUTIONS