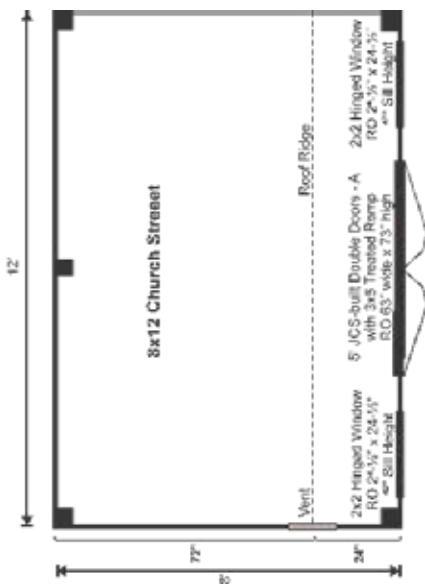


FULLY ASSEMBLED



We took our Saltbox shed and gave it some flair. The roofing is upgraded to architectural asphalt shingles with a copper roll ridge cap and the siding is horizontal Eastern White pine clapboard.



FULLY ASSEMBLED:

A weather tight shell. Specifications are the same as a PCK. Fully assembled prefabricated sheds and cottage buildings deliver exclusively to the northeast USA.

EVERY KIT INCLUDES

- Color Coded
- Part Numbered

• Step-by-Step Instructions
• All Fastening Hardware Included

Configure Yours at

WWW.JAMAICACOTTAGESHOP.COM

8X12 CHURCH STREET

STORAGE SOLUTIONS



8X12 CHURCH STREET FULLY ASSEMBLED

Base Area: 96 sq. ft.

Total Interior Area: 96 sq. ft.

Recommended Foundation:
4-6" Crushed Gravel

Overall Dimensions: 10'6"H
x 13'2"W x 8'10"D

Estimated Weight: 3500 lbs

Floor System

2 (qty) 4"x6"x12' Hemlock Skids

2"x6" rough sawn Hemlock
Joists 24" On Center

3/4" CDX Plywood Floor Decking

Floor Weight Rating: 25 lbs/sq. ft.

Walls

4"x4" Hemlock Post and
Beam Wall Framing

Wall Height: Front: 83" Rear: 71"

Siding: Horizontal Pine Clapboard

1" rough sawn Pine Corner, Door
& Window Trim & 2" rough sawn
Pine Fascia & Shadow Trim

Roof

Saltbox Roof Style

The fully assembled unit includes hemlock framing, pine clapboard siding, floor decking, corrugated metal roof, windows and doors. Note: Pictures may reflect client upgrades and modifications that do not come standard.

Roof Pitch: Front: 12/12 Rear: 6/12

2"x6" rough sawn Hemlock
Rafters 24" On Center

1"x6" rough sawn Hemlock
Exposed Collar Ties

1" rough sawn Solid Barn
Board Roof Sheathing

Black Architectural Asphalt Shingles
with Copper Roll Ridge Cap

Doors & Windows:

Door: 1 (qty) 5-0 JCS-built 2" Thick
rough sawn Pine Double Doors
w/ 3x5 Pressure Treated Ramp

Windows: 2 (qty) 2'x2' six-lite
Hinged Barn Sash Window

Additional Features

1 (qty) Wood Louvered Vent

Delivery & Logistics Information

Fully Assembled prefabricated sheds and cottage buildings are deliverable exclusively to the Northeast USA.

CHURCH.8X12.FA

STORAGE SOLUTIONS