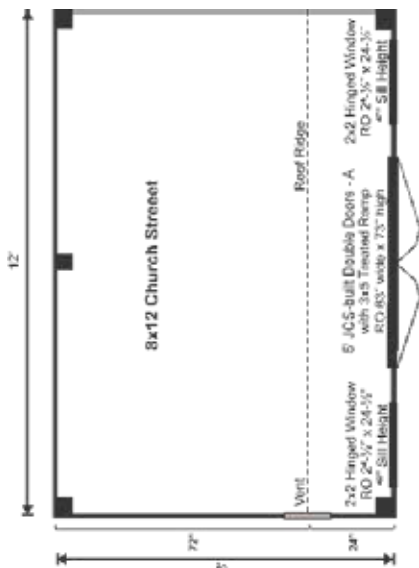


COMPLETE Pre-Cut Kit



We took our Saltbox shed and gave it some flair. The roofing is upgraded to architectural asphalt shingles with a copper roll ridge cap and the siding is horizontal Eastern White pine clapboard.



COMPLETE PRE-CUT KIT:

A weather tight shell. The PCK is the complete kit for a design. It includes everything required to assemble the building shell and includes doors and windows.

EVERY KIT INCLUDES

- Color Coded
- Part Numbered
- Step-by-Step Instructions
- & All Fastening Hardware Included

Configure Yours at

WWW.JAMAICACOTTAGESHOP.COM

8X12 CHURCH STREET

STORAGE
SOLUTIONS



8X12 CHURCH STREET COMPLETE PRE-CUT KIT

Base Area: 96 sq. ft.

Total Interior Area: 96 sq. ft.

Recommended Foundation:

4-6" Crushed Gravel

Overall Dimensions: 10'6"H
x 13'2"W x 8'10"D

Estimated Weight: 3500 lbs

Floor System

2 (qty) 4"x6"x12' Hemlock Skids

2"x6" rough sawn Hemlock

Joists 24" On Center

3/4" CDX Plywood Floor Decking

Floor Weight Rating: 25 lbs/sq. ft.

Walls

4"x4" Hemlock Post and

Beam Wall Framing

Wall Height: Front: 83" Rear: 71"

Siding: Horizontal Pine Clapboard

1" rough sawn Pine Corner, Door

& Window Trim & 2" rough sawn

Pine Fascia & Shadow Trim

Roof

Saltbox Roof Style

The complete pre-cut kit includes hemlock framing, pine clapboard siding, floor decking, asphalt shingle roof, double doors and barn sash windows. Note: Pictures may reflect client upgrades and modifications that do not come standard.

Roof Pitch: Front: 12/12 Rear: 6/12

2"x6" rough sawn Hemlock

Rafters 24" On Center

1"x6" rough sawn Hemlock

Exposed Collar Ties

1" rough sawn Solid Barn

Board Roof Sheathing

Black Architectural Asphalt Shingles

with Copper Roll Ridge Cap

Doors & Windows:

Door: 1 (qty) 5-0 JCS-built 2" Thick

rough sawn Pine Double Doors

w/ 3x5 Pressure Treated Ramp

Windows: 2 (qty) 2'x2' six-lite

Hinged Barn Sash Window

Additional Features

1 (qty) Wood Louvered Vent

Assembly & Logistics Information

Estimated Assembly Time:

Two People: 24 hrs

Estimated Shipping Cube Sizes

Cube 1: 42"x46"x144"

CHURCH.8X12.PCK