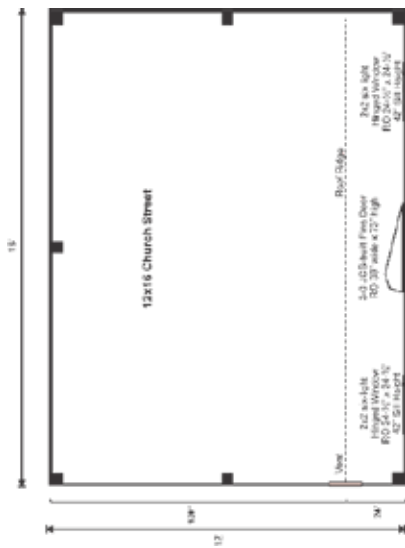


# 3-SEASON Pre-Cut Kit



We took our Saltbox shed and gave it some juicy upgrades. The roofing is upgraded to architectural asphalt shingles with a copper roll ridge cap and the siding is horizontal Eastern White pine clapboard. Bring it up a notch by adding flower boxes and a weathervane.



## 3-SEASON KITS:

A three-season kit prepares the building for interior finishing. It includes complete PCK version plus vapor barrier, solid roof sheathing and insulated floor system.

## EVERY KIT INCLUDES

- Color Coded
- Part Numbered
- Step-by-Step Instructions
- All Fastening Hardware Included

Configure Yours at

[WWW.JAMAICACOTTAGESHOP.COM](http://WWW.JAMAICACOTTAGESHOP.COM)

# 12X16 CHURCH STREET

LIVING  
SOLUTIONS



## 12X16 CHURCH STREET 3-SEASON PRE-CUT KIT

Base Area: 192 sq. ft.

Total Interior Area: 192 sq. ft.

Recommended Foundation:  
6–8" Crushed Gravel

Overall Dimensions: 10'6"H  
x 17'2"W x 13'2"D

Estimated Weight: 5600 lbs

### Floor System

- 2 (qty) 6"x6"x16' Hemlock Skids
- 2"x6" Kiln Dried Spruce Joists 24" On Center
- 3/4" CDX Plywood Floor Decking
- Floor Vapor Barrier
- 5 1/2" Fiberglass Insulation (R21)
- Under Deck Sheathing: 3/8" Plywood
- Floor Weight Rating: 25 lbs/sq. ft.

### Walls

- 4"x4" Hemlock Post and Beam Wall Framing
- Wall Height: Front: 83" Rear: 67"
- Wall Vapor Barrier
- Siding: Horizontal Pine Clapboard
- 1" rough sawn Pine Corner, Door & Window Trim & 2" rough sawn Pine Fascia & Shadow Trim

The 3-season kit includes the complete kit plus floor insulation, vapor barrier for the floor, walls and roof, solid pine roof sheathing, barn sash windows and a single pine door. Note: Pictures may reflect client upgrades and modifications that do not come standard.

### Roof

- Saltbox Roof Style
- Roof Pitch: Front: 12/12 Rear: 4/12
- 2"x6" rough sawn Hemlock
- Rafters 24" On Center
- 1"x6" rough sawn Hemlock
- Exposed Collar Ties
- 1" rough sawn Solid Barn Board Roof Sheathing
- Roof Vapor Barrier
- Black Architectural Asphalt Shingles with Copper Roll Ridge Cap

### Doors & Windows:

- Door: 1 (qty) 3-0 JCS-built 2" Thick rough sawn Pine Single Door, no ramp
- Windows: 2 (qty) 2'x2' six-lite Hinged Barn Sash Window

### Assembly & Logistics Information

- Estimated Assembly Time: Two People: 53 hrs
- Estimated Shipping Cube Sizes
- Cube 1: 42"x44"x192" Cube 2: 42"x60"x192"

CHURCHL.12X16.3SPCK

©2021 Jamaica Cottage Shop, Inc. • 1-802-210-1249 • [www.JamaicaCottageShop.com](http://www.JamaicaCottageShop.com)

LIVING  
SOLUTIONS

