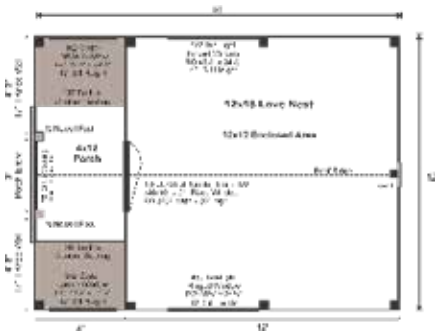


COMPLETE Pre-Cut Kit



Featuring a stunning integrated porch with keyhole style entrance, decorative lattice work, and two comfy built in benches. This lovely design works perfectly as a shed, pond house or playhouse.



COMPLETE PRE-CUT KIT:

A weather tight shell. The PCK is the complete kit for a design. It includes everything required to assemble the building shell and includes doors and windows.

EVERY KIT INCLUDES

- Color Coded
- Part Numbered
- Step-by-Step Instructions
- & All Fastening Hardware Included

Additional Sizes:

12X12 | 12X16 | 12X20 | 12X24 |

Additional Types:

FRAME ONLY KIT | COMPLETE KIT | FULLY ASSEMBLED | 3-SEASON KIT | 4-SEASON KIT

Configure Yours at

WWW.JAMAICACOTTAGESHOP.COM

12X16 LOVE NEST

STORAGE
SOLUTIONS



12X16 LOVE NEST COMPLETE PRE-CUT KIT

Base Area: 192 sq. ft.

Total Interior Area: 144 sq. ft.

Porch Area: 48 sq. ft.

Recommended Foundation:
6–8" Crushed Gravel

Overall Dimensions: 10'6"H
x 13'2"W x 17'2"D

Estimated Weight: 6000 lbs

Floor System

- 2 (qty) 6x6x16' Hemlock Skids
- 2"x6" rough sawn Hemlock Joists 24" On Center
- 3/4" CDX Plywood Floor Decking
- 1" rough sawn Hemlock Porch Decking
- Floor Weight Rating: 25 lbs/sq. ft.

Walls

- 4"x4" Hemlock Post and Beam Wall Framing
- Wall Height: 82"
- Siding: 1" rough sawn Pine Board & Batten
- 1" rough sawn Pine Corner, Door & Window Trim & 2" rough sawn Pine Fascia & Shadow Trim

Roof

- Gable Roof Style
- Roof Pitch: 4/12 Porch: 4/12

The complete pre-cut kit includes hemlock framing, pine board and batten siding, floor decking, corrugated metal roof, pine door and barn sash windows. Note: Pictures may reflect client upgrades and modifications that do not come standard.

2"x6" rough sawn Hemlock Rafters 24" On Center

1"x6" rough sawn Hemlock Exposed Collar Ties

1"x4" rough sawn Hemlock Strapping 20" On Center

Corrugated 29g Metal Roofing, Color: Evergreen

Door & Windows:

Door: 1 (qty) 3-0 JCS-built 2" Thick rough sawn Pine Single Door with 16"x21" Fixed Window, no ramp

Windows: 2 (qty) 4'x2' ten-lite Hinged Barn Sash Window, 2 (qty) 3'x2' Lattice Window on Porch

Additional Features

- 1 (qty) Wood Louvered Vent
- Cedar Lattice Front with 6' Circular Entry
- Two 36" Pine Built In Contour Benches

Assembly & Logistics Information

Estimated Assembly Time:
Two People: 36 hrs

Estimated Shipping Cube Sizes

Cube 1: 42"x42"x192" Cube 2: 42"x48"x120"

LOVE.12X16.PCK

STORAGE
SOLUTIONS